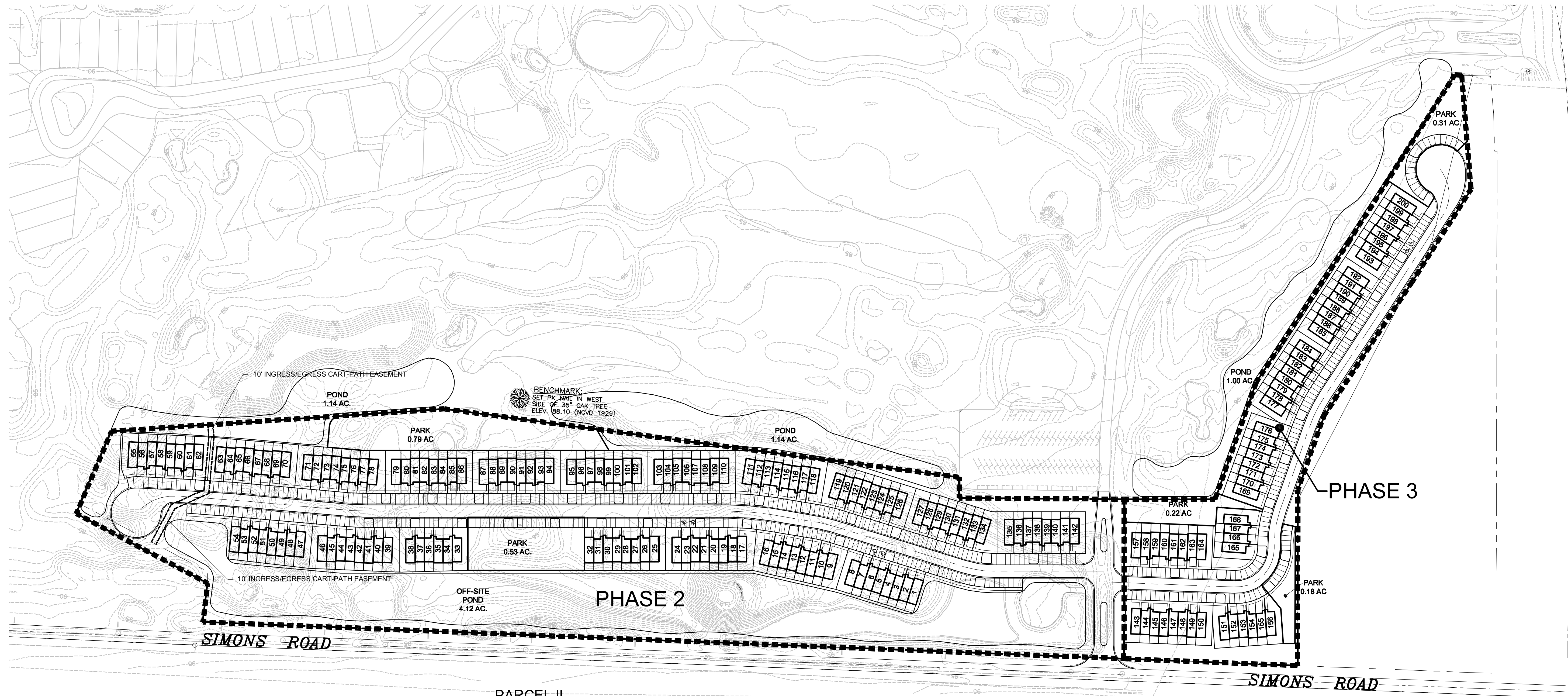
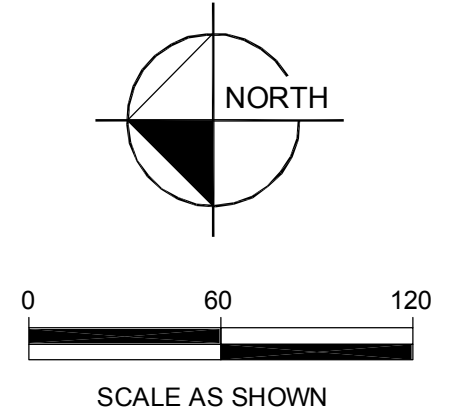


TOTAL SITE INFORMATION
 PROPERTY AREA: 21.68± ACRES
 TOTAL UNITS 200
 RETENTION PONDS 7.40 AC.
 PARK 2.03 AC.



PARCEL II
 PROPERTY AREA: 16.48± ACRES
 BUILDING TYPE: TOWNHOMES (UNITS 142)
 RETENTION PONDS 6.40 AC.
 PARK 1.23 AC.

PARCEL III
 PROPERTY AREA: 5.19± ACRES
 BUILDING TYPE: TOWNHOMES (UNITS 58)
 RETENTION PONDS 1.00 AC.
 PARK 0.71 AC.

Drawing name: H:\CBD_Sketches\CADD\Preliminary\RESERVE\PSO-BASE 4.dwg Layout1 (3) Oct 03, 2005 10:55am by: SergioPenton
 This document, together with the concepts and designs presented herein, is intended only for the specific purpose and client for which it was prepared. Reuse of and improper reliance on this document without written authorization and adaptation by Kimley-Horn and Associates, Inc. shall be without liability to Kimley-Horn and Associates, Inc.

No.	REVISIONS	DATE	BY

SCALE AS NOTED
 DESIGNED BY
 DRAWN BY
 CHECKED BY

Kimley-Horn and Associates, Inc.
 AS NOTED
 © 2005 KIMLEY-HORN AND ASSOCIATES, INC.
 5344 Ninth Street, Zephyrhills, FL 33542 SP
 Phone: (813) 788-0400 Fax: (813) 782-4978
 ENGINEERING BUSINESS No. 5331 SMR

DATE
 PROJECT NO.

THE PRESERVES OF SILVER OAKS
 FLORIDA

CONCEPTUAL PLAN PHASE 2 & 3

DESIGN ENGINEER:
 FLORIDA REGISTRATION NUMBER:
 DATE:

SHEET NUMBER
1
 1 of 1